

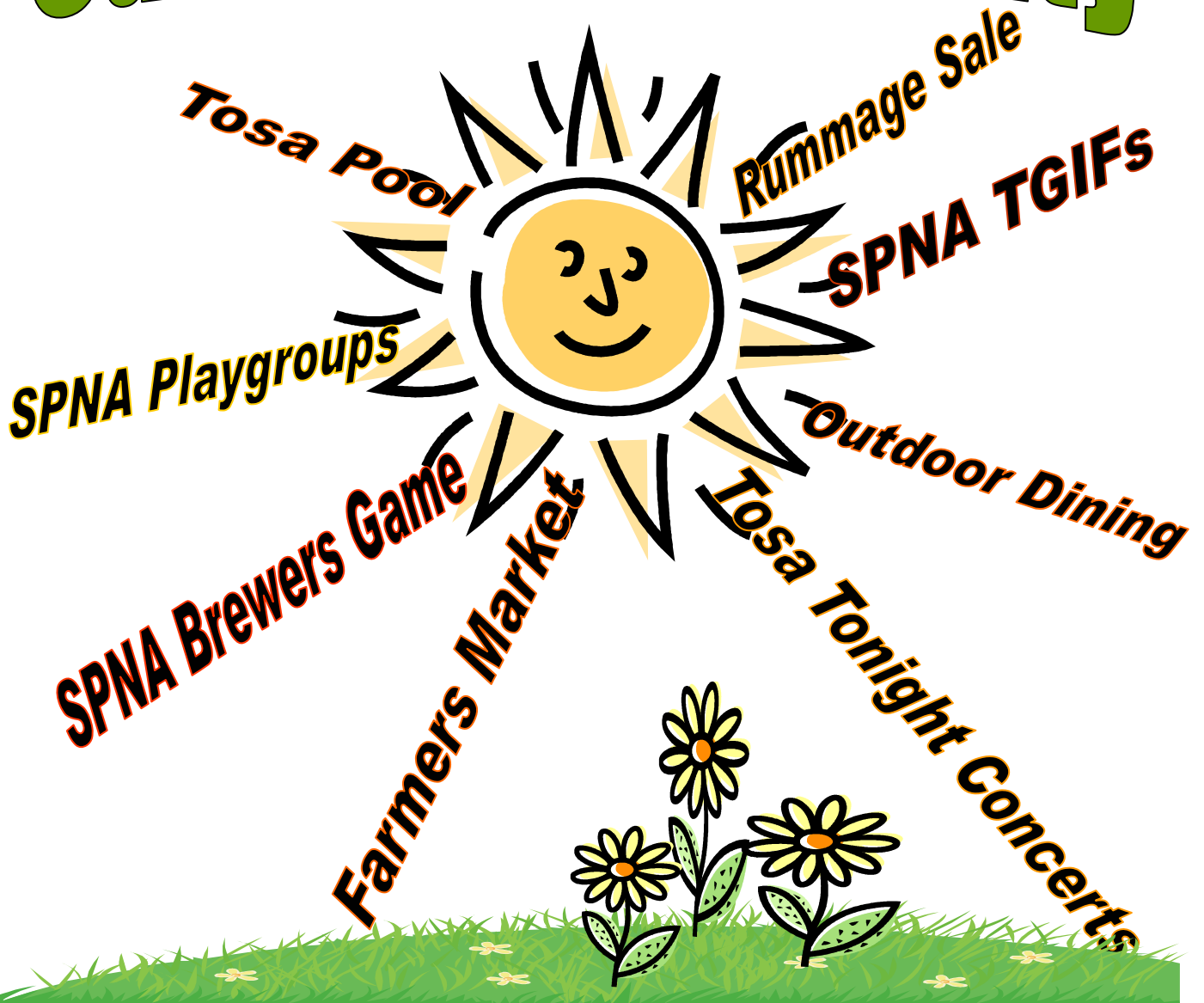
July 2011

  
*Swan Park*  
*Neighborhood Association*

FULL COLOR newsletter edition on our website at [www.swanpark.com](http://www.swanpark.com)

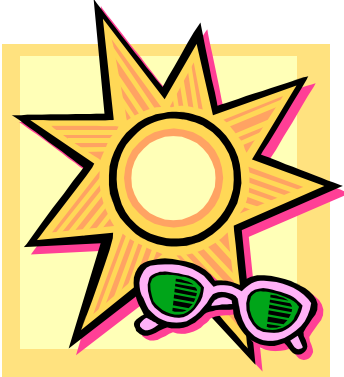
Like us on Facebook: Swam Park Tosa

# Summer in the City



## *President's Message*

July 2011



Hello Swan Park neighbors!

Summer is finally here?! Despite the lousy weather thus far, I still see people out walking, biking, playing, and doing yard work. After many months of winter hibernation, it's great to get out and visit with neighbors!

Summer also means the start of the Swan Park neighborhood TGIF socials. Thank you to Maura Riordan for volunteering to recruit for and organize these socials. They are a great way to wind down the week and spend time with people in the neighborhood.

I am also excited for the upcoming Brewers game planned for September 11<sup>th</sup>. Please consider joining us for the game and pre-game tailgating. Yet another way to spend time with people you know and meet new people in the neighborhood.

I am pleased to welcome Rachele Lehr as the new SPNA Treasurer. Thank you, Rachele, for giving of your time and talent. Without people like Rachele who step up and volunteer their time, our thriving neighborhood association would cease to exist.

Rachele will be taking over for Stephanie Timmers. Stephanie has been involved with the neighborhood association for over six years, first as the Social Chair and then as Treasurer. I

would like to thank Stephanie for her many years with us. I will miss working with her very much.

I look forward to seeing many of you at a TGIF, at the Brewers game, at the pool, or walking through the neighborhood. As always, I welcome your questions, thoughts, or concerns. Please feel free to stop by or contact me anytime.

Happy Summer!

Liz Brener



Natalie Jauch and Mikayla Timmers having summer fun at the last SPNA playgroup.

## Swan Park Events



### Annual Neighborhood Rummage Sale

Friday, September 9 9am to 5pm

Saturday, September 10 9am to 2pm

It's never too early to start planning for the Swan Park Annual Rummage Sale. This year's sale will be held the weekend after Labor Day, September 9<sup>th</sup> and 10<sup>th</sup>. To be included on the rummage map, please complete the registration form below and mail it or drop it off: Liz Brener, 9425 Beverly Place. On-line registration is now available for SPNA members at [www.swanpark.com](http://www.swanpark.com).

**>>> The deadline for rummage registration is September 4<sup>th</sup> <<<**

Rummage participation is **free** for Swan Park Neighborhood Association members, \$5.00 for non-members and includes:

- Having your home listed on the map
- Advertising in the Journal/Sentinel, Wauwatosa NOW, Fox 6 Rummage Tracker and yards signs throughout the neighborhood.
- Maps to hand out at your rummage

If you are able to help distribute maps to participating neighbors prior to the sale, please contact Liz Brener at 771-5701 or [jlabren@yahoo.com](mailto:jlabren@yahoo.com).

**People come from all over to shop this rummage. It is a great opportunity to get rid of unwanted items. Sign up now and start organizing!!!**

#### RUMMAGE REGISTRATION

Friday, September 9th 9:00am-5:00pm

Saturday, September 10th 9:00am-2:00pm

Mail or deliver to:

Liz Brener 9425 Beverly Pl., 771-5701

Deadline for registration: September 4th

Name: \_\_\_\_\_

Address: \_\_\_\_\_

Phone: \_\_\_\_\_ Email: \_\_\_\_\_

I will be selling:

Baby clothes       Toys       Appliances       Artwork / Jewelry       Electronics

Adult clothes       Books       Tools       Furniture / Antiques

Please check:     MEMBER (No fee)       NON-MEMBER (Please enclose \$5 fee)

## Swan Park Events

### SWAN PARK NEIGHBORHOOD ASSOCIATION

NOW ON

facebook



The Swan Park Neighborhood Association now has a page on Facebook called "Swan Park Tosa".

Be sure to choose the PAGE and not the GROUP – we're going to phase out the group. (The PAGE icon is currently a black/white sketch of a swan.)

Please tell your friends in the neighborhood who are on Facebook, but might not be association members. We'd love to have any one from the neighborhood following us – members or not - so they, too, can stay informed about topics and announcements related to Swan Park.

You can "Like" the Swan Park Tosa page and then see updates about neighborhood news and events in your news feed.



### Swan Park Book Club 2

July 14, 7:30

*The Housekeeper and the Professor* by Yoko Ogawa at the home of Rebecca Bark, 9417 Beverly Place.

August 18, 7:30

*The Paris Wife*, by Paula McLain at the home of Lori Brandenburg, 9329 Beverly Place



Book club members meet every 6 weeks on a Thursday at 7:30 p.m. If you are interested in finding out about the meeting location or which book we are currently reading, please email Liz Brener at [jlaren@yahoo.com](mailto:jlaren@yahoo.com) or Hannah Harris at [hannahharris71@gmail.com](mailto:hannahharris71@gmail.com)

SWAN  
**SERV-U**  
PHARMACY

9130 W. North Ave.  
Wauwatosa, WI 53226  
Phone 414-258-9550



**For All Your Automotive Needs...**

- BRAKES • TUNE-UPS • OIL CHANGES • EXHAUST SYSTEMS
- BATTERIES • SHOCKS • AND SO MUCH MORE!

*At the Corner of 92nd & Center!*

**9130 WEST CENTER ST. MILWAUKEE, WI 53222**

PHONE: 414-476-PAUL (7285)  
FAX: 414-476-8670



## Swan Park Events

### Swan Park Play Group

- July 1** No playgroup: 4th of July weekend  
**July 8** Stephanie Timmers - 2565 N 95th St.  
starting at 4:00 pm rolling into 6:30 TGIF  
**July 15** Open  
**July 29** Fire Station - We'll meet at 1463 Under-  
wood Ave. at 10:00am  
**August 5** Rebecca Bark - 9417 Beverly Pl.  
**August 12** Molly Hopp - 2631 N. 95th Street  
**August 26** Jennifer Armbruster - 9302 Beverly Pl.

Do you have little ones at home and are looking for fun ways to get out and about? Join us at the Swan Park Play Group! We usually meet every other Friday morning at a neighborhood home or a local park. It is a great opportunity for the kids (and us parents too) to play and make new friends.

To be added to our reminder e-mail that goes out a few days before a playgroup date or for further information, please contact Maura Riordan, 414-704-1263 or [riordanmaura@yahoo.com](mailto:riordanmaura@yahoo.com).

### TGIF "Thank Goodness It's Friday" Parties

A great way to get to know your neighbors ... watch for yard signs.

- July 8** Stephanie & Mike Timmers' home  
2565 N. 95th - ALL ARE WELCOME!

SPNA provides soda, water, ice, plates, cutlery, cups. The Timmers will also have a grill and condiments available for anyone who would like to bring something to cookout for dinner.



TGIF socials are typically once per month starting around 6:30pm-shine only-and are hosted in a neighborhood back yard. Bring your own chairs, adult beverages and maybe a small appetizer to share.

**If you would like to host a TGIF**, please contact Maura Riordan at 704-1263 or [riordanmaura@yahoo.com](mailto:riordanmaura@yahoo.com).



Frankie and Brady Malloy play hoops during the SPNA Playgroup and June TGIF at Dan & Maura Riordan's home.



### West Tosa Libations Group

Beer or wine aficionado? You are invited to meet your neighbors while enjoying an adult evening with the West Tosa Libations Group.

- July 29 7:00pm**  
**Hosts: Mary Riemer, Steve & Melanie McCauley**  
**2360 N. 84th St. ~ 414-475-1438**  
**[mary.riemer@att.net](mailto:mary.riemer@att.net)**  
**Theme: Hawaii**

Attendees are asked to please bring a wine, beer or other drink from Hawaii (or inspired by Hawaii) and a small dish to share.



- September 30 7:00pm**  
**Hosts: Dave and Sally Smith**  
**2367 N. 89th Street ~ 414-517-3027**  
**[smithdav@live.com](mailto:smithdav@live.com)**  
**Theme: TBA**

Good conversation ... great wine and beer ... new friendships ... relaxing night out.

If you would like to join the group or host the next gathering, please send an email to: [tosalibations-subscribe@yahoogroups.com](mailto:tosalibations-subscribe@yahoogroups.com).

Questions? Please contact Hannah at 875-7200 or [hannahharris71@gmail.com](mailto:hannahharris71@gmail.com)

## *Swan Park Board and Committees*

# SPNA NEEDS YOU! POSITIONS OPEN

***Do you have 1-2 hours per month to help make this a vibrant neighborhood association?***

***Please contact SPNA President, Liz Brener at 771-5701 if you have interest in helping in any of these areas:***

- |  |  |
|--|--|
| <input type="checkbox"/> Events                  | <input type="checkbox"/> Neighborhood Watch          |
| <input type="checkbox"/> Halloween               | <input type="checkbox"/> Neighbors Helping Neighbors |
| <input type="checkbox"/> Website                 | <input type="checkbox"/> Community Concerns/Charity  |
| <input type="checkbox"/> Playgroup               |  |
| <input type="checkbox"/> Book Club               | Association Governance / Board:                      |
| <input type="checkbox"/> Membership              | <input type="checkbox"/> President                   |
| <input type="checkbox"/> Newcomers               | <input type="checkbox"/> President Elect (VP)        |
| <input type="checkbox"/> Website                 | <input type="checkbox"/> Secretary                   |
| <input type="checkbox"/> Rummage Sale            | <input type="checkbox"/> Treasurer                   |
| <input type="checkbox"/> Newsletter              |  |
| <input type="checkbox"/> Newsletter Distribution |  |

***Can you join us today?***

With a small investment of time you can personally add to the well-being of your Swan Park Neighborhood.

- Make new friends!
- Try something new!
- Contribute to your community!

***Successful neighborhood associations increase the safety and desirability of a neighborhood.***

### **IMMEDIATE NEED FOR:**

**PRESIDENT ELECT (VP):** Perform the duties of the President or other officers when not available, 1-2 hours per month plus monthly Board meetings. Learn the role of the President and prepare to step into that role in spring of 2013. Contact Liz Brener at 771-5701.

### **Social Chair and NEIGHBORHOOD EVENT COORDINATORS NEEDED**



Do you have an idea for a neighborhood event and could help plan it?

Would you like to meet more of the people in your neighborhood?

Outings to sports events, Holiday Party, Annual Board Meeting, TGIF Schedule, Wine Tastings, Block Parties, Ladies' Nights or anything else you'd like to plan.

This group also needs a **Social Chair or Co-Chairs** who would be a member(s) of the Swan Park Neighborhood Association board.

Contact Liz Brener at 771-5701 if interested.

Swan Park Neighborhood Association Board meetings are usually held the second Tuesday of each month at 7:30pm in a fun and relaxed atmosphere.



## Swan Park Board and Committees

### **BLOCK WATCH PROGRAM NEEDS VOLUNTEERS**

#### **Crime Watch News**

Keeping our neighborhood safe is important, but cannot be done alone. In the Swan Park neighborhood we are currently looking for a neighborhood-wide Block Watch Coordinator and volunteers to be Block Watch Captains. Historically Swan Park has been a leader in this area, let's keep this momentum going and maintain a strong and safe neighborhood!

**What are the responsibilities of a Block Watch Captain?** The average Block Watch Captain has between 10 and 25 homes on their "block." Responsibilities include hosting a one time start-up meeting and distributing the Tosa Watch Newsletter to their block every three months.

**What does the neighborhood receive?** An informational meeting presented by a Wauwatosa Police Officer, neighborhood Block Watch map, quarterly newsletter, Block Watch signage for every home and crime prevention materials.

If you are interested in learning more about this program or have other questions or concerns regarding the safety of our neighborhood, please contact SPNA President, Liz Brener at 771-5701.



**Neighborhood safety is important to all of us.** Statistically, crimes are on the increase during the summer months. Schools are on summer break, families are on vacations, and doors and windows are left open and unattended to enjoy the beautiful summer weather. As part of a wonderful and friendly neighborhood, it is our responsibility to get to know our neighbors and report any suspicious activities to the police.

**There is no better time than now to become a Block Watch Captain.** It is really easier than you think. You don't need to be home all day spying on your neighbors. That is not what this program is about. The responsibilities of a block captain include passing out a bimonthly newsletter to the people on your block, to be the contact person for the police department, and to get to know your neighbors.



National Accreditation Commission for  
Early Care and Education Programs

*Where children  
are encouraged  
to discover, explore  
and play!*

**Applications for 2011-2012 school  
year are being accepted now.**

**414-774-5005 ext 113 or 108**

**2366 N. 80th Street  
Wauwatosa, WI 53213**

**www.ccnstosa.com  
admin@ccnstosa.com**

*Swan Park Events*

# Swan Park



# Outing



**Tickets: \$10 (same price for adults & children)**  
**Each ticket includes a coupon for a free hot dog and small soda from Miller Park concessions**

**Sunday, September 11 ~ 1:10pm**  
**Brewers vs. Phillies**

- 11:00am** Caravan departs Swan Park  
Meet at 9425 Beverly Place
- 11:15-1:00** Tailgate - SPNA will provide food, soda and water. Please bring your own adult beverages and lawn chairs.
- 1:10pm** Game starts



**YES! We plan to attend the SPNA Brewers Outing ... please sign us up!**

**Name:** \_\_\_\_\_

**Address/Phone:** \_\_\_\_\_

**# of Adults:** \_\_\_\_\_ **X \$10.00 = \$** \_\_\_\_\_

**# of Children** \_\_\_\_\_ **X \$10.00 = \$** \_\_\_\_\_

**Checks payable to SPNA - TOTAL ENCLOSED = \$** \_\_\_\_\_

**\*\*\* ORDER DEADLINE: AUGUST 10 \*\*\***

**Drop off or mail to Event Coord, Reagan Jauch, 2561 N. 94th Street, 414-810-3407**

## Tosa News

### 2011 Yard of Distinction Awards

Yard of Distinction nominations will be accepted now through July 15, 2011. Nominations are also being



taken for a new category, "Container Gardens of Distinction". Contact Kathy Lichter at (414) 257-1819 or [dlichter5@wi.rr.com](mailto:dlichter5@wi.rr.com) to nominate a front yard or container display that deserves special recognition.



Evan Timmers enjoying the SPNA Playgroup.

*Natural Beauty*  
for Your Mind and Spirit

**LANDCRAFTERS**  
Creating Quality of Life

LandCraftersLandscaping.com | 262-827-1604 | 2145 S. 162nd St. | New Berlin, WI 53151

# WELCOME!

Due to the distribution of the 2011 SPNA Member Directory, the Welcome new neighbors and newborns section will return in the October edition of the SPNA newsletter.

#### ANNOUNCEMENTS?

Any news to share with your neighbors? Births, weddings, graduations, honors, special birthdays, anniversaries ... Contact Christine Eggert at: 414-257-1030 or [ceggertx2@gmail.com](mailto:ceggertx2@gmail.com).

## Tosa Events

### JULY



**July 9**

**10:00am-5:00pm (rain or shine)  
17th Annual "The Secret  
Gardens of Wauwatosa" Tour**

Presented by: Wauwatosa  
Beautification Committee

Tour private gardens plus the  
beautiful gardens at the Kneeland-Walker house, where master gardeners and plant societies will be on hand selling plants and garden related items, as well as answering garden questions. Ticket holders will have the opportunity to meet Melinda Myers; sponsored by Kanavas Landscape Management. More info: <http://wbc-wi.org>

**July 7 - 16**

**Wauwatosa Plein Air Affair** - throughout Tosa

More info: [www.wauwatosahistoricalsociety.org](http://www.wauwatosahistoricalsociety.org)

**Thursdays through July 21**

**Hoop Vive, Hart Park**

A Healthy Perspective Chiropractic and Massage is organizing Hula Hoop Classes by Hoop Vive ([www.hoopvive.com](http://www.hoopvive.com)). They will be held at Hart Park on Thursdays at 6:30 pm from June 2 through July 21. The cost is \$40 for 8 weeks or \$8 per drop in. To reserve your spot, please make a check out to Hoop Vive and send it to Dr. Sara Zach at 7918 Harwood Ave, Wauwatosa, WI 53213.



### AUGUST

**August 2**

**Tosa's Night Out** at Hart Park

**August 3, 5:00 - 9:00PM**

**Diva Night, Village of Wauwatosa**

Ladies, you're invited to visit the participating Village of Wauwatosa shops for DIVA NIGHT sponsored by Firefly Real Estate on August 3 from 5:00-9:00PM. It will be an evening filled with shopping, sipping and noshing!

**August 6 - 7, 10:00am - 5:00pm**

**Firefly Art Fair**

Kneeland Walker House, 7406 Hillcrest Drive

More info: <http://wauwatosahistoricalsociety.org>

**August 7**

**A Tribute to our Armed Forces**

484th Army Band, Rotary Performance Pavilion,  
68th & State St.

**August 24, 8:00pm**

**Free Family Film Night**

By the Hart Park performance stage. More info @ [www.wauwatosa.net](http://www.wauwatosa.net)

## ROBERTS Optical

38 Years of Experience Fitting  
Ophthalmic Lenses and Frames

**ROBERT MARTELLARO**

CERTIFIED OPTICIAN/OWNER

**SWAN PARK RESIDENT**

**9211 West Center St.**

**Wauwatosa, WI**

**414-771-3250**



[www.roberts-optical.com](http://www.roberts-optical.com) or e-mail [robopt@execpc.com](mailto:robopt@execpc.com)

## Tosa Events

### SEPTEMBER

**Sept 9 - 10**

#### **Tosafest 2011**

Harwood and State St, Village of Wauwatosa

Tosafest 2011 continues Wauwatosa's 32 year tradition of music, food, and family fun, to celebrate our historic village and community spirit. Each year, proceeds from TosaFest support community projects in the areas of education, safety and neighborhood improvement, to name a few. Countless volunteers work year-round to create this memorable event that entertains and benefits the whole community.

For more details go to [www.tosafest.org](http://www.tosafest.org)

---

#### **September 17**

#### **Household Hazardous Waste Collection Event Wauwatosa City Hall parking lot, 7725 W North Ave**

MMSD MobileCollection unit will be at the Wauwatosa City Hall parking lot of Sept 17 from 8am to 2pm to collect HOUSEHOLD hazardous waste.  
<http://v3.mmsd.com/HHW.aspx>

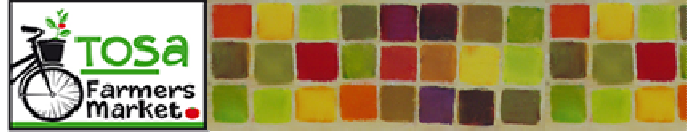
Go to <http://v3.mmsd.com/HHW.aspx> to learn more about kitchen, garage, garden related items that can be brought to the collection unit as well as items that are not accepted.

This is a great opportunity to clean out all of those hazardous odds and ends that need special care in disposal. Business are NOT allowed to use this program.

---

Visit [www.villageoftosa.com](http://www.villageoftosa.com) and [www.wauwatosa.net](http://www.wauwatosa.net) for complete listing of community events.

### FARMERS MARKETS



**Saturdays thru 10/15**

**8:00am - 1:00pm**

City Parking lot across the river from Café Hollander and across the street from the

[Historic Little Red Store](#)

7720 Harwood Ave.

More info: [www.tosafarmersmarket.com](http://www.tosafarmersmarket.com)



#### **Hartung Park Farmers Market**

**Wednesdays, beginning July 6, 4:00 - 7:00 pm**

The Hartung Park Farmers Market will once again be offering fruits, vegetables, and fresh eggs from local five farmers. Stop by! Hartung Park is located north of W. Burleigh Street and east of Mayfair Road along Menomonee River Parkway and Argonne Drive.

## *Tosa Events*

# TOSA TONIGHT

**2011** Summer Concert Series

### **Wauwatosa SOUNDS better than ever!**

Join your community for another summer of Tosa Tonight performances at the beautiful Rotary Performance Pavilion! Come back with us to the "lazy" days of summer, when life was so simple and the cool evening breeze welcomed each twilight. Sip ice-cold beverages, sample a delicious variety of food with your neighbors, indulge in some fresh ice cream and other treats, all topped off with fantastic music.

Bring your lawn chairs, blankets, a candle, and of course, family and friends, but most importantly, your appetite and thirst. Your food and beverage purchases directly raise money for the on-going non-profit operation of the Rotary Performance Pavilion and future Tosa Tonight concerts.

Opening act starts at 6:00 p.m., main act at 7:30 p.m. Concerts are held rain or shine, but may be cancelled due to lightning or severe weather.

These free concerts are made possible by the generous support of our sponsors. Become a sponsor by downloading a sponsorship form from the website ([www.tosatonight.com](http://www.tosatonight.com)) and make a tax deductible donation. You will improve the cultural and entertainment quality of life in Wauwatosa for generations to come.

### **SCHEDULE:**

#### **Wednesday, July 13:**

Peter D'Amore - 6pm

Mama Digdown's Brass Band - 7:30pm

#### **Wednesday, August 17:**

Irish Fest Preview Evening - 6pm

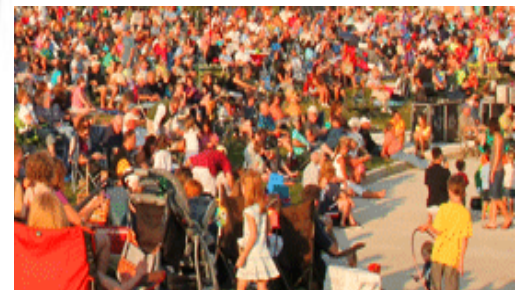
#### **Tuesday, September 13:**

Maxie's & Blue's Egg present Paul Cebar

### **Volunteers needed:**

TOSA TONIGHT is a nonprofit group, organized 100% by a volunteer committee of dedicated Wauwatosa area residents and business owners. The TOSA TONIGHT organization works in conjunction with the Neighborhood Association Council of Wauwatosa (NAC), Village of Wauwatosa Business Improvement District (BID) and The Wauwatosa Economic Development Corporation (WEDC).

There are many opportunities to "Join the Tosa Tonight Bandwagon" and help out the cause. To volunteer your efforts to the Tosa Tonight concert series, please complete the volunteer form on their website ([www.tosatonight.com](http://www.tosatonight.com)). There are many areas in which you could help out including, setup, cleanup, food sales, poster distribution, marketing, and much more!



# Working with You to Build a Better Community.



*Just the partner you need.*

## **M&I Bank**

9210 W. North Avenue  
(414) 258-7200

[www.mibank.com](http://www.mibank.com)

310 682 70

Member FDIC



## **ROB WOOD**

ASSOCIATE VICE PRESIDENT | REALTOR®  
414.476.9070, ext. 323 | [rwood@shorewest.com](mailto:rwood@shorewest.com)

- Over \$76 million SOLD
- Certified Shorewest Relocation Specialist
- National Sales Award Recipient
- Five-Star: Best in Client Satisfaction™ Real Estate Agent by *Milwaukee Magazine* 2008-2011

### **NOBODY KNOWS SWAN PARK BETTER!**

11622 West North Avenue  
Wauwatosa, WI 53226

**Shorewest**  
REALTORS®

[shorewest.com](http://shorewest.com)

1140

## Swan Park

### Do do and don't do ...

Did you see the recent news article about an apartment manager's dilemma in Lebanon, N.H.?

#### ***"Complex to crack down on dog poop with DNA tests"***

Read more:

<http://www.azcentral.com/offbeat/articles/2011/06/24/20110624new-hampshire-dog-poop-dna-test.html#ixzz1QXCMZbYz>

Luckily, we live in a *great* neighborhood where almost all dog owners respect their neighbors' property and clean up after their dogs. However, since grass cutting season began, there have been several requests from residents to remind some of the dogwalkers that the removal and proper disposal of dog waste is required by Wauwatosa Municipal Code ... Stepping in dodo on a hot summer day while cutting the grass is truly a *don't want to do* ...



Some neighbors have also found dog waste bags in the sewer grates - please dispose of dog waste bags in your trash receptacles.

*The grass cutters of Swan Park thank you!*

#### **Wauwatosa Municipal Code:**

##### **9.04.020 - Regulation of animals.**

###### **A. Restrictions on Owners of Animals.**

**1. Restrictions.** It shall be a violation of this chapter for the owner of an animal to do or permit any of the following within the city:

**f.** To not remove the animal's excrement from public property or the property of another person when walking or loose. The owner or person walking an animal on property other than his or her own shall remove any excrement immediately after it is deposited by such animal and dispose of it in a public waste container or a waste container on the animal owner's property. The owner is required to carry a scoop, bag or other item to assist in carrying the excrement to his or her property for disposal. Source:

<http://library.municode.com/index.aspx?clientId=16684&stateId=49&stateName=Wisconsin>

## What's up with that?

**Q:** Ol' Tripod, the 3-legged coyote, is back and cruising the Swan Park neighborhood. Is it dangerous? What should I do if I see it?

**A:** According to the WI Humane Society website ([www.wihumane.org](http://www.wihumane.org)), coyotes are usually wary of humans and will avoid people whenever possible. Aggressive behavior toward people is not normal and is most often a result of habituation due to feeding by humans. If you encounter a coyote, remember the following:

- Never feed or attempt to "tame" a coyote.
- Avoid direct eye contact.
- Do not turn your back or run.
- Attempt to leave the area calmly.

If followed, make loud noises and make yourself look big. If this fails, throw rocks or sticks in the direction of the coyote, being careful not to hit the coyote.

Coyotes are not considered a disease threat. Outbreaks of rabies in coyotes are rare and not commonly implicated in the transmission of the disease to humans or companion animals.

Curious about something around the neighborhood?

E-mail us at [ceggertx2@gmail.com](mailto:ceggertx2@gmail.com)



Not an actual picture of Tripod - he's missing half of his right rear leg. Please email us a picture if you have one.

## SWAN PARK NEIGHBORHOOD ASSOCIATION MEMBERS

### RECEIVE \$50 OFF THEIR 1040

We specialize in the following services:

- Individual Tax Returns Including E-filing
- Corporate Financial Statements and Tax Returns
- Accounting Software Implementation
- Business Valuations
- Buying/Selling a Business
- Financial Statement Projections and Business Plans

Contact your neighbor, Mike, to answer any of your accounting or tax questions

Michael Bark, CPA/CVA/MST  
Bark Accounting & Tax, LLC  
850 Elm Grove Road, Suite 25  
Elm Grove, WI 53122  
262-432-7309 phone  
262-432-7319 fax  
Or Visit us on the Web at  
[www.barkaccounting.com](http://www.barkaccounting.com)

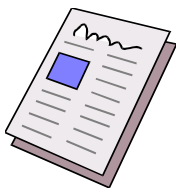


**Next Newsletter Deadline:**

**Friday, September 2nd**

The next newsletter will be distributed at the beginning of October. The deadline for articles or photos submitted by members is Friday, Sept. 2nd.

Please email your submissions to ceggertx2@gmail.com or send to Christine Eggert at 2398 N. Menomonee River Pkwy.



**Newsletter Advertising Rates**

Interested in advertising to the Swan Park Neighborhood? For the yearly rates listed below, your ad will be published in quarterly newsletters, the annual directory, and on the website (www.swanpark.com). If advertising in just one issue, use 25% of the annual fee.

SIZE

Business Card (3.5" x 2")	\$120
1/4 page (3.5" x 4.5")	\$220
1/2 page (7" x 4.5")	\$360
Full Page (7" x 9")	\$500

Contact Rachele Lehr for further information or to place an ad. Call 602-410-9800 or via email at rachelelehr@hotmail.com

**New Advertising Opportunity:** You provide a full page preprinted insert and we will stuff and deliver the ad with the newsletter. Cost= \$50 per newsletter. Contact Rachele Lehr, 602-410-9800 or rachelelehr@hotmail.com

***Swan Park Officer and Committee Chair Directory***

**Swan Park Officers:**

**President**

Liz Brenner  
9425 Beverly Pl., 771-5701  
jlabren@yahoo.com

**President Elect (VP): Open**

**Secretary**

Hannah Harris  
9517 Beverly Pl., 875-7200  
hannahharris71@gmail.com

**Treasurer**

Rachele Lehr  
9511 Harding Blvd., 602-410-9800  
rachelelehr@hotmail.com

**Committee Chairs:**

**Membership**

Kathy Willmering  
9310 Ridge, 476-6051  
kathywillmering@gmail.com

**Newsletter Editor**

Christine Eggert  
2398 N. Menomonee River Pkwy,  
ceggertx2@gmail.com, 257-1030

**Newsletter Distribution**

Reagan Jauch  
2561 N 94th, 810-3407  
reaganjauch@yahoo.com

**Website**

Dan Eick  
2417 N. 96th, 258-1986  
oily@wi.rr.com

**Newcomers**

Jodi Glunz  
9410 Wilson Blvd., 257-2983  
jodiglunz@yahoo.com

**West Tosa Libations Group**

Hannah Harris  
9517 Beverly Pl., 875-7200  
hannahharris71@gmail.com

**Book Club**

Liz Brener  
9425 Beverly Pl., 771-5701  
jlabren@yahoo.com

**Neighbors Helping Neighbors**

Greg O'Hearn  
2425 N. 95th St., 443-0096  
ohearn@offwis.com

**Playgroup**

Maura Riordan  
2511 N. 95th, 704-1263  
riordanmaura@yahoo.com

**Rummage Coordinator**

Liz Brener  
9425 Beverly Pl., 771-5701  
jlabren@yahoo.com

**Community Concerns**

Bethanne Mazurczak  
2337 Swan Blvd., 453-2919  
jmazurczak@wi.rr.com

**TGIF**

Maura Riordan  
2511 N. 95th, 704-1263  
riordanmaura@yahoo.com

**Social Events Chair: Open**

**Neighborhood Watch: Open**

\* Please note that all emails from the neighborhood association come from:

**Swan Park Tosa**  
**swanparktosa@gmail.com**